

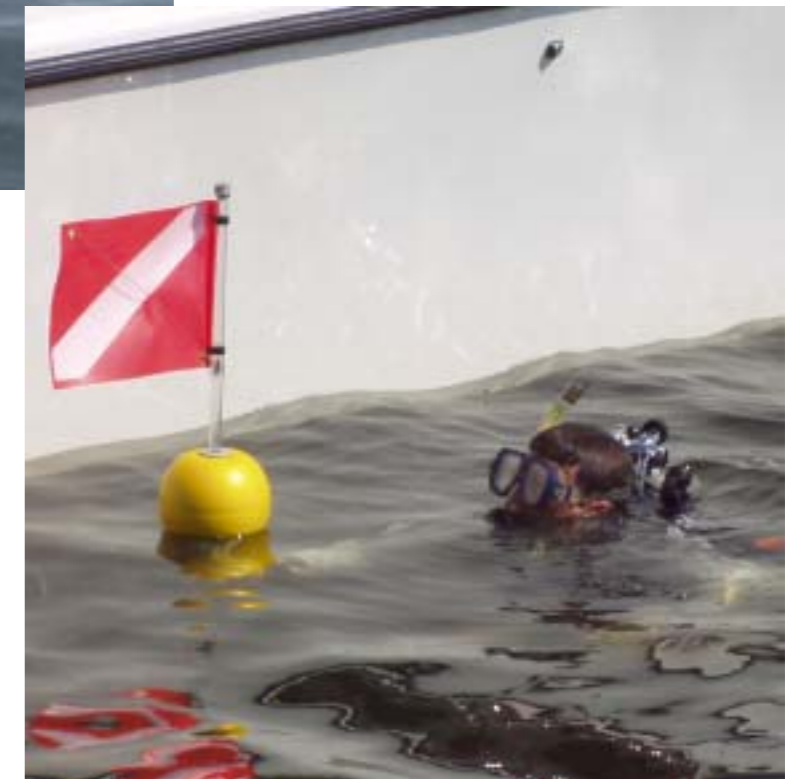
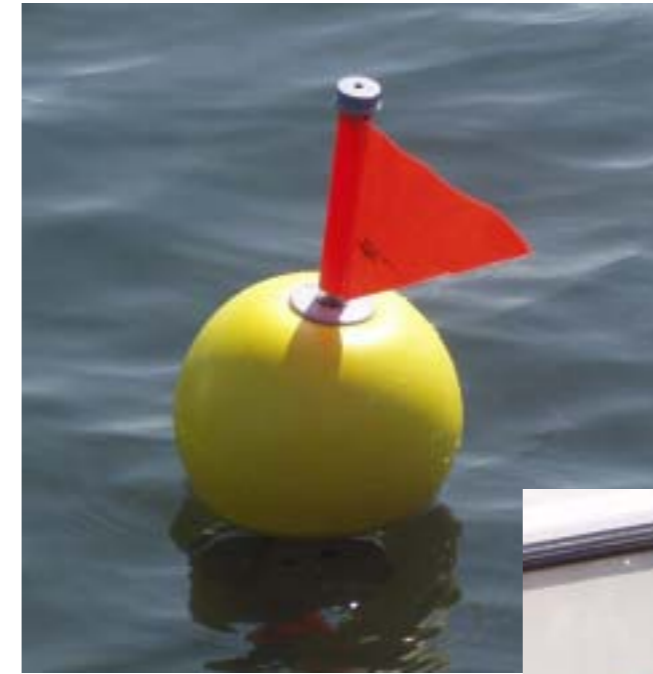


Parts List

-  Complete Suremarker™ Buoy (Part No. SB001)
-  Complete Suremarker™ Dive Buoy (Part No. SDB001)
-  Handle (Part No. DH 002)
-  Flagpole (Part No. FP 003)
-  #4 Soft Weight (Part No. SW060)
-  Flagpole Extension Lock (Part No. PXL 007)
-  Flagpole Cap (Part No. FPC 004)
-  Flag (Part No. SF 005)
-  Rudder Handle (Part No. HR 030)
-  Dive Flag (Part No. DF 007)
-  Dive Flag Kit (Part No. DFK 006)
-  Clicker & Washer Kit (Part No. CWL 010)
-  Replacement Line/100# Test 200' (Part No. RL 016)
-  Spool Shaft (Part No. SS 017)
-  Stainless Steel Spool Shaft (Part No. SSS 018)
-  Spool (Part No. S 016)
-  Buoy Weight Leader (Part No. BWL)


Suremarker, LLC
 8000 Fruitville Road
 Sarasota, FL 34240
 Tel. (941) 379-0533 • Fax (941) 379-8320
 Web: www.suremarker.com Email: info@suremarker.com


“The jug might get you close, but the
 Suremarker™ will put you on the fish.”
Captain Rob Roberts



www.suremarker.com

info@suremarker.com



The Product

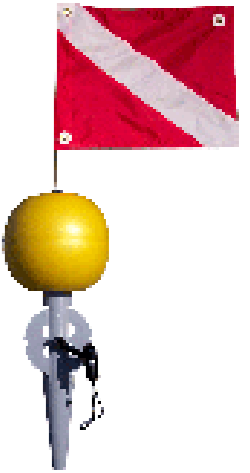
- The Suremarker™ is made with the highest grade plastics and PVC
- Prevails in harsh salt water and sun conditions
- Fast Deployment - No back lash
- Stops and locks into place automatically at desired depth
- Anchoring aid - The highly visibly flag indicates wind direction
- Night fishing - Insert a glow stick in the clear tubing and watch the bait swarm
- Easily retrieved with the patented clicker reel
- Portable - fits in most rod holders and rocket launchers
- Great for drift fishing when using two Suremarkers™
- One year limited warranty

Product Specifications

- Dive flag kit available
- Premium cloth florescent orange flag
- Highly visible float and flag
- High density PVC foam float
- 200 ft. of 100 lb. braided nylon line
- Detachable crank handle with lanyard



NEW Suremarker™ Products



Directional Rudder/Handle

Rudder Handle

- Turns buoy with tide
- Grab handle for easy buoy pickup



Dive Flag Kit

- Kit adapts to fishing buoy
- Legal size for in water
- Easily retractable

Retrieving Fast & Easy

- Stainless Steel Shaft
- Fits 3/8" sockets
- Retrieve line with rechargeable drill



For new items, inquire webpage www.suremarker.com

Some new items not available until 2006

Ease of Use

- The lightning speed of deployment, balanced with the precise depth locking system assures your spot to be within inches of the Suremarker™. No missed marks!
- Accurate deployment of the Suremarker™ is easy. Simply remove the crank handle, throw the suremarker overboard using a 4 to 4-1/2 lb. weight affixed to the line and the automatic release will do the rest.
- Set your anchor, drift back to your spot and hold on to those rods.
- To retrieve, simply gaff the Suremarker underneath the float. Use wrist cord while attaching the crank handle and reeling in.